





# TOUGHBOOK N1

## 4.7" SLIM AND LIGHTWEIGHT HANDHELD TABLET WITH ANGLED REAR BARCODE READER

The TOUGHBOOK N1 with Android™ 9 is one of the thinnest and most lightweight handheld tablets in the 4.7" category. The device offers numerous unique features, including an angled rear barcode reader which protects users from repetitive strain and enhances productivity, and an optional passive and active pen for precise handwriting and signature capture.

This cutting-edge device has been designed for mobile workers in the postal and courier services, transportation and logistics, emergency and public safety, utilities, retail, manufacturing and defence sectors.

- Android™ 9
- 4G LTE / 3G data and voice capability
- Integrated 1D/2D angled rear barcode reader
- Qualcomm® SDM660-2 Octa-core processor
- 3 GB RAM, 32 GB storage and microSD card slot
- 4.7" HD (1280 x 720) daylight-readable display with glove and rain mode
- Optional passive and active pen for precise signatures
- MIL-STD 810G certified with 2.1 metre drop resistance
- IP68 rated (submersible in water up to 1.5 metre for 30 minutes)
- 8MP rear and 5MP front camera
- User-replaceable battery with warm-swap function
- NFC, Bluetooth 5, Wi-Fi, micro USB port and docking connector
- Triple microphones for superior noise suppression
- Dual front speakers delivering in total up to 100 dBA

*All technical specifications are subject to change without notice.*

## TOUGHBOOK N1 ACCESSORY ECOSYSTEM



Panasonic COMPASS covers everything you need to deploy and manage your Panasonic rugged Android tablets and handhelds securely in your business, over their lifetime. Look out for the logo next to the software and services that fall under the COMPASS umbrella in this catalogue.

Visit [business.panasonic.co.uk/computer-product/COMPASS](https://business.panasonic.co.uk/computer-product/COMPASS) to find out more.

## POWER MANAGEMENT SOLUTIONS

### Standard Battery Pack (3200 mAh)

Part No: FZ-VZSUN110U



### Extended Battery Pack (6400 mAh)

Part No: FZ-VZSUN120\* \*U/W  
(U: with back case; W: without)



### USB Charger Kit

Part No: FZ-KN1AA00\*

\*1: Continental; 2: UK



### AC Power Supply

For use with multi-bay cradles.

Part No: CF-AA5713A\*  
\*E/G/T/D

\*E: UK; G: Continental; T:  
Italian; D: Swiss



### AC Power Supply

For use with charging cup (FZ-  
VCBN11U) and single desk top  
cradle (FZ-VEBN111\*)

Part No: CF-AA6373A\*  
E/G/T/D

\*E: UK; G: Continental; T:  
Italian; D: Swiss



### Low Power Adaptor (32W)

Part Nos:

- PCPE-LND1234 - 12-32Vdc
- PCPE-LND1214 - 12-16Vdc



### Mil Spec Vehicle Charger (90W)

11 to 32VDC

Part No: CF-LNDMLSTD



### Car Charger For Forklifts (90W)

Part Nos:

- PCPE-LNDFH11: 70-110V
- PCPE-LNDFH32: 12-32V
- PCPE-LNDFH60: 20-60VDC



All technical specifications are subject to change without notice.

## PRODUCTIVITY SOLUTIONS

### Panasonic TOUGHB00K N1 Active Pen

Part No: FZ-VNPN11U



### Stylus Tether

Part No: PCPE-INFUVA2



### Panasonic Thin Nib Passive Pen

Part No: CF-VNP021U



### Capacitive Stylus Pen

Part No: PCPE-LDYST02



## SECURITY & PROTECTION SOLUTIONS

### LCD Screen Cleaning Cloth

Part No: CF-VNC002U

MOQ: 10 pcs



### Shatterproof Protective LCD Film

10 sheets

Part No: FZ-VPFN11U



*All technical specifications are subject to change without notice.*

## CARRYING SOLUTIONS

### Panasonic Holster for TOUGHBOOK N1

With belt / waist strap only.

Part No: FZ-VSTN12U



### Panasonic Hand Strap for TOUGHBOOK N1

Part No: FZ-VSTN11U



### TOUGHBOOK N1 Holster

Includes belt and shoulder strap for hands-free use and stylus loop.

Size: 102 x 165 x 57mm / 4.0 x 6.5 x 2.25"

Part No: PCPE-INFF1H1



### TOUGHBOOK N1 T-Strap

Size: 57 x 114 x 13mm / 2.3 x 4.5 x 0,5"

Part No: PCPE-INFTSTP



## MOBILE PRINT SOLUTIONS

### PJ7 Series A4 Mobile Printers

Perfectly dimensioned for your briefcase or computer bag, PJ7 series of compact, direct thermal printers can also be easily mounted in your vehicle. Take it out on the road and make sure your clients and customers receive those all-important documents in an instant. Available with 300 dpi print resolution, and with USB, Bluetooth or Wi-Fi.

Part No.: PCPE-BRPJ763  
PCPE-BRPJ773

PJ763 A4 mobile printer, 300 dpi with USB & Bluetooth  
PJ773 A4 mobile printer, 300 dpi with USB, Wi-Fi and AirPrint



All technical specifications are subject to change without notice.

## DOCKING SOLUTIONS

### Charging Cup and Stand

AC adaptor not included. Purchase CF-AA6373A\* E/3/D separately.

Part No: FZ-VCBN11U



### Single Device Desktop Cradle

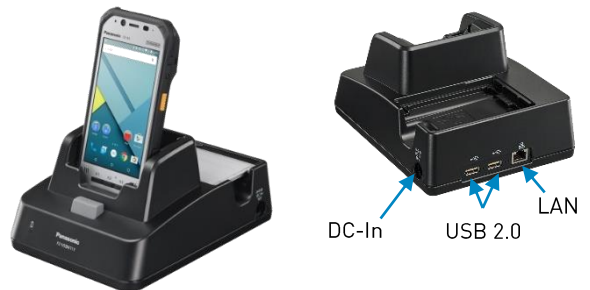
AC adaptor included (CF-AA6373AE/G/T/D)

Dimensions: 43 x 194 x 99mm / 5.7 x 7.7 x 3.9"

Weight: Approx. 0.52kg / 1.2 lb

Part No: FZ-VEBN111A\* E/3/D

\*E: UK; 3: Continental; D: Swiss



### 5-Bay Desktop Cradle

AC adaptor included (CF-AA5713A\*)

Weight and dimensions to be confirmed.

Ports: 2 x LAN; DC-In

Part No: FZ-VEBN141\* E/3/D      Power and LAN

FZ-VCBN141\* E/3/D      Power only

\*E :UK; 3: Continental; D: Swiss



All technical specifications are subject to change without notice.

## DOCKING SOLUTIONS

### TOUGHBOOK N1 Vehicle Dock

Accommodates additional configuration options and certain hand straps.  
Power only (power supply not supplied). AMPS mounting pattern.

Dimensions: 115 x 190 x 90 mm (4.5 x 7.5 x 3.5")

Weight: 0.3 kg / 0.7 lb

Part Nos:

- PCPE-GJN1V01 With power, keyed alike
- PCPE-GJN1V02 With power, keyed differently
- PCPE-GJN1V03 No power, keyed alike



---

### TOUGHBOOK N1 4-Cup Charging Rack

Rack mountable, includes 4-way power lead.

Part No: PCPE-CDS4BC\* 1/2

\*1: Continental adaptor; 2: UK adaptor



---

### Forklift Suction Cup Mounting Kit

Kit contains:

- 3.3" diameter Twist Lock Single Suction Cup Mount
- 1" diameter standard length (185 mm) double socket arm
- AMPS Round Base Adapter plate with 1" ball

For use with PCPE-GJN1V01/2/3/4. Vehicle dock to be purchased separately.

Part No: PCPE-RAM202U



*All technical specifications are subject to change without notice.*



## PRODUCTIVITY SOLUTIONS

### Compact Wearable Barcode Scanner

Part Nos:

- PCPE-PGLSCN1 – Standard Range
- PCPE-PGLSCN2 – Mid Range



### Barcode Scanner Charging Cradle

With International plugs

Part No: PCPE-PGLCHR3



### Index Trigger Wrap - 3 Pcs. Pack

Part Nos:

- PCPE-PGLITSL - Left Hand, Size Small
- PCPE-PGLITML - Left Hand, Size Medium
- PCPE-PGLITLL - Left Hand, Size Large
- PCPE-PGLITSR - Right Hand, Size Small
- PCPE-PGLITMR - Right Hand, Size Medium
- PCPE-PGLITLR - Right Hand, Size Large



### Bluetooth Headset

Part No: PCPE-MODBTH1



### Headset Battery Charger – 10 bay

Part No: PCPE-MOD10BC



### Replaceable Batteries – 25 pack

Part No: PCPE-MODBAT1



All technical specifications are subject to change without notice.

## PROFESSIONAL SERVICES



### Android Installation

Part No: PCPE-PSANDRD

Price on Request

### Custom ROM Creation

Price and SKU on Request. Depends on complexity.

### SIM Installation

Part No: PCPE-PSSIMIN

### Asset Tagging

Standard, using CPE label set.

Part No: PCPE-PSATAG1

### Information Management Bundle

IMEI, MAC, SIM, ASSET, Hardware Hash reporting.

Part No: PCPE-PSATAGB

### Solution Packaging

Up to 10 items packaged together in a box.

Does not include custom designed case.

Part No: PCPE-PSSPACK

### Customer Branding

Logo badge on device casing or bezel.

Part Nos: PCPE-PSLOGOB

### Customised Deployment / Logistics

Part No: PCPE-PSCDL01

Price on Request.

*All technical specifications are subject to change without notice.*

## LIFECYCLE SUPPORT



### Extended Warranty (4 or 5 years)

Panasonic's Extended Warranty provides an additional two years of warranty, helping you to minimise repair costs and maximise the life cycle of your TOUGHBOOK or Toughpad.

Part No.: HH-LESPEW\* \*4 / 5

### COMPASS Complete (3, 4 or 5 years)



A special warranty bundle for TOUGHBOOK Android devices including accidental damage cover, COMPASS Security Android long term security updates and optional Smart Service real time analytics.

COMPASS Complete:

FZ-YCZDCOMP1U	3 year COMPASS Complete for N1
FZ-YCZDCOMP3U	4 year COMPASS Complete for N1
FZ-YCZDCOMP5U	5 year COMPASS Complete for N1

Smart COMPASS Complete (with Smart Service) **MOQ 10:**

FZ-YCZDCOMP7U	3 year Smart COMPASS Complete for N1
FZ-YCZDCOMP9U	3 year Smart COMPASS Complete for N1
FZ-YCZDCOMPBU	3 year Smart COMPASS Complete for N1

### Smart Battery Warranty

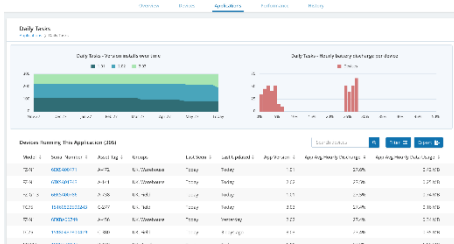


Smart Battery Monitor software, powered by B2M Solutions, monitors device battery health in real-time. Smart Battery Monitor will indicate when batteries reach low capacity during normal use, so a replacement battery can be sent out in advance. Available at point of sale of device only.

Part No.: CF-LESPBASS3/4/5 3/4/5 year Smart Battery Warranty

All technical specifications are subject to change without notice.

### TOUGHBOOK Smart Service

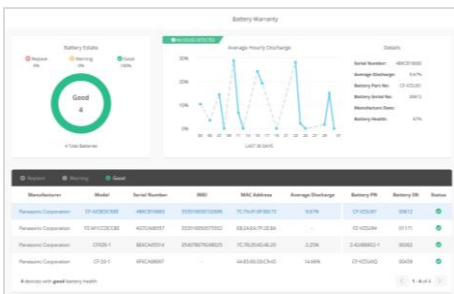


Real time analytics, powered by B2M Solutions, showing the health and performance of your estate of mobile devices, focussing on areas such as battery life, data usage, disruptions and connectivity. Enables the user to recognise patterns of usage and potentially pre-empt issues before they arise.

Part Nos.:

- **CF-LESPSSM3** 3 year Smart Service self-managed licence
- **CF-LESPSSM5** 5 year Smart Service self-managed licence

### Smart Battery Monitor

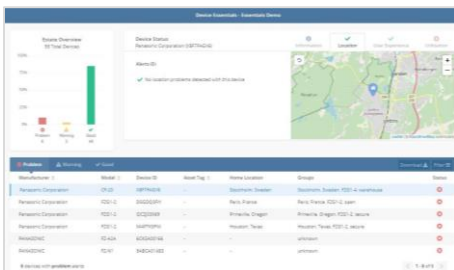


An additional “Smart” module that monitors battery usage and health in detail, focusing on battery serial numbers, the software allows the customer to track, identify and replace batteries before they impact productivity. With dashboard access and alerts.

Part Nos:

- **CF-LESPBAEE1** 1 year Smart Battery Monitor software licence
- **CF-LESPBAEE3** 3 year Smart Battery Monitor software licence
- **CF-LESPBAEE5** 5 year Smart Battery Monitor software licence

### Smart Device Monitor



An additional “Smart” module that monitors device usage in more detail. Dashboard access provides information such as device location; user experience, including drop detection on Android devices and also enables alerts and geofences to be set up.

Part Nos:

- **CF-LESPDAEE1** 1 year Smart Device Monitor software licence
- **CF-LESPDAEE3** 3 year Smart Device Monitor software licence
- **CF-LESPDAEE5** 5 year Smart Device Monitor software licence

## SOFTWARE SOLUTIONS – PREMIER PARTNERS



### Absolute Data and Device Security

Patented technology to centrally secure TOUGHBOOK devices for unrivalled endpoint security and data risk management.

*Part numbers available upon request.*

Website: <https://www.absolute.com/partners/oem/panasonic/>



### NetMotion Mobility

More than just a VPN, "Mobility" Mobile Performance Management software can dynamically maintain access to applications through changing network conditions, allowing mobile workers to remain productive anywhere their work takes them. Diagnostics option also available.

*Part numbers available upon request.*

Website: <https://www.netmotionsoftware.com/products/mobility>



### SOTI MobiControl

MobiControl is an Enterprise Mobility Management (EMM) solution with enhanced EMM features like application management, content management, location services and remote help.

*Part numbers available upon request.*

Website: <https://www.soti.net/products/soti-mobicontrol/>



### Sygic

Sygic Professional GPS Navigation works offline and features truck specific routing, itinerary with time windows and over 60 APIs for development with Android and Windows based apps.

*Part numbers available upon request.*

Website: <https://www.sygic.com/enterprise/professional-gps-navigation-sdk>

For more info on these software solutions, please refer to the co-branded data sheet [here](#).

## SOFTWARE SOLUTIONS – CERTIFIED PARTNERS



### StayLinked

StayLinked's SmartTE software provides a cost-effective way to take advantage of touchscreen devices with Terminal Emulation by transforming traditional "green screen" application screens into easy-to-use, graphical screens with no changes to the underlying enterprise applications.

For more information or to request a demo, visit:  
<https://www.staylinked.com/panasonic>



### Loqus

Loqus Fleet Ltd specialises in the provision of end-to-end Transport management systems providing organisations with the necessary tools to help them Plan, Execute and Monitor & Control work orders from initial order taking down to the last mile. Headquartered in Malta, the group employs a passionate team of high calibre software engineers supported by an experienced management team

Visit website: <http://openfleet.loqusgroup.com/>



### Acronis

Acronis sets the standard for cyber protection and hybrid cloud storage through its innovative backup, anti-ransomware, disaster recovery, storage, and enterprise file sync and share solutions. Enhanced by its award-winning AI-based active protection technology, blockchain-based authentication and unique hybrid-cloud architecture, Acronis protects all data in any environment – including physical, virtual, cloud, mobile workloads and applications – all at a low and predictable cost.

Visit website: <https://www.acronis.com>



### GPC Systems

GPC is an award-winning software house with over 25 years of experience working with a range of sectors across the globe. Driven by the needs of their customers in healthcare, transportation, police, logistics and local government, GPC strives to improve outcomes through the most efficient use of resources. GPC has in-depth experience creating solutions utilising 3D cameras, including the Intel® RealSense™ technology integrated into the TOUGHBOOK M1.

Visit website: <https://www.gpcsl.com/>

*All technical specifications are subject to change without notice.*

## ACCESSORY SUMMARY 1

Solution Type	Part Number	Description
Power Management	FZ-VZSUN110U	Standard Battery Pack (3200 mAh)
	FZ-VZSUN120U/W	Extended Battery Pack (6400 mAh)
	FZ-KN1AA00* 1 / 2	USB Charger Kit (1: Continental; 2: UK)
	FZ-VCBN121* E/3/D	4-bay Battery Charger (E: UK; 3: Continental; D: Swiss)
	CF-AA6373A* E/G/T/D	AC Power Supply (*E: UK; G: Continental; T: Italian; D: Swiss)
	CF-AA5713A* *E/G/T/D	AC Power Supply (*E: UK; G: Continental; T: Italian; D: Swiss)
	CF-LNDMLSTD	Mil Spec vehicle charger (90W)
	PCPE-LND1234	32W Power Adaptor (12-32Vdc)
	PCPE-LND1214	32W Power Adaptor (12-16Vdc)
	PCPE-LNDFH* 11/32/60	90W charger for forklifts
Styluses	FZ-VNPN11U	TOUGHBOOK N1 Active Pen
	PCPE-LDYST02	Capacitive Stylus Pen
	CF-VNP021U	Panasonic Capacitive Passive Pen
	PCPE-INFUVA2	Stylus Tether
Protection & Security	CF-VNC002U	Cleaning Cloth for LCD
	FZ-VPFN11U	Shatterproof Protective LCD film
Carrying Solutions	FZ-VSTN12U	Panasonic Holster for TOUGHBOOK N1
	FZ-VSTN11U	Panasonic Hand Strap for TOUGHBOOK N1
	PCPE-INFF1H1	TOUGHBOOK N1 Holster
	PCPE-INFF1S2	TOUGHBOOK N1 Enhanced Hand Strap
	PCPE-INFF1S1	TOUGHBOOK N1 Hand Strap
Docking Solutions	FZ-VCBN11U	Charging cup and stand (AC adaptor not included)
	FZ-VEBN111A* E/3/D	Single Device Desktop Cradle
	FZ-VEBN141* E/3/D	5-Bay Desktop Cradle – LAN and Power
	FZ-VCBN141* E/3/D	5-Bay Desktop Cradle – Power only
	PCPE-GJN1V01/2/3	TOUGHBOOK N1 Vehicle Dock
	PCPE-CDS4BC1/2	4-Cup Charging Rack (1: Continental; 2: UK)
Forklift Mounts	PCPE-RAM202U	Suction cup forklift mounting kit, AMPS
Printing Solutions	PCPE-BRPJ763	PJ763 A4 mobile printer, 300 dpi with USB & Bluetooth
	PCPE-BRPJ773	PJ773 A4 mobile printer, 300 dpi with USB, Wi-Fi and AirPrint
Productivity	PCPE-MODBTH1	Bluetooth Headset
	PCPE-MOD10BC	Bluetooth Headset 10 Bay Charger
	PCPE-MODBAT1	Bluetooth Headset Replaceable Batteries – 25 pack
Barcode Scanner Solutions	PCPE-PGLSCN1	Standard Range Barcode Scanner
	PCPE-PCGCHR2	Barcode Scanner Charging Cradle EU
	PCPE-PGLIT* SL/ML/LL	Index Trigger Glove – 3 Pcs. Pack (SL: Left Hand Small Size, ML: Left Hand Medium Size, LL: Left Hand Large Size)
	PCPE-PGLIT* SR/MR/LR	Index Trigger Glove – 3 Pcs. Pack (SR: Right Hand Small Size, MR: Right Hand Medium Size, LR: Right Hand Large Size)

*All technical specifications are subject to change without notice.*

## ACCESSORY SUMMARY 2

Solution Type	Part Number	Description
Professional Services	PCPE-PSANDRD	Android Installation
	PCPE-PSSIMIN	SIM Installation
	PCPE-PSATAG1	Asset Tagging
	PCPE-PSATAGB	Information Management Bundle
	PCPE-PSSPACK	Solution Packaging
	PCPE-PSLOGOB	Customer Branding
	PCPE-PSCDL01	Customised Deployment / Logistics
COMPASS	FZ-YCZDCOMP* 2U/4U/6U	COMPASS Complete
	FZ-YCZDCOMP* 8U/AU/CU	Smart COMPASS Complete
Lifecycle support solutions	HH-LESPEW* 4/5	Extended Warranty
	HH-LESPAD* 3/4/5	Accidental Damage Warranty
	CF-LESPBASS* 3/4/5	Smart Battery Warranty

Panasonic and TOUGHB00K are brand names and registered trademarks of Panasonic Corporation. Microsoft® and Windows® are registered trademarks of Microsoft® Corporation of the United States and/or other countries. All rights reserved. Google, Android and other marks are trademarks of Google Inc. All rights reserved. All other brand names shown are the registered trademarks of the relevant companies.

Computer Product Solutions (CPS) BU, Panasonic System Communications Company Europe (PSCEU), Panasonic Marketing Europe GmbH, Hagenauer Straße 43, D-65203 Wiesbaden (Germany).